

**Technical Associates** 1946



***NEW***  
**AIR MONITORING PRODUCTS**  
**Un-Veiled at AMUG**

PRESENTED BY  
**ROBERT GOLDSTEIN**

# **NEEDED: Moving Filter Head for Alpha CAMS**



## **REASONS:**

**Allow Unattended Use**

**Save Manpower**

**Dusty, Salty Environments**

# COMPLETE ALPHA AIR CAM DETECTOR & PAPER FEED SYSTEM



Model **MFH-AB**





**Open-Face Breathing-Zone Operation For Room-Air  
Sniffer-Hose From Hood, Glove-Box or Stack**



# REMOTE START, SINGLE STEP

Paper tape steps 1.5” then waits for a ‘start’ pulse



**OR**

**TIMED OPERATION –  
Pre-Set Time with Auto-Repeat**



**1 Month Unattended Use -Filter Tape Advance Every Hour**

**1 Year Unattended Use – Filter Tape Advance Once Every 8 Hours**

**Remote Air Sampling Detector Head With Clear Front Panel**



# **OPTIONS AND ACCESSORIES**

## **MASS FLOW SENSOR**

**Option Of Precision Hotwire Sensor Or Simple Rotometer**

**Power Options: 115AC-50/60HZ Standard, 230AC-50Hz, And DC System Also Available As An Option**



# MOUNTING SETUP OPTIONS

**Unit Can Be Hand Held, Wall Mounted Or Set On Tripod**





**MOVING FILTER HEAD FOR ALPHA AIR CAM**  
**Model # MFH-AB**

- MOVING FILTER TAPE
- REMOTE AIR SAMPLING DETECTOR HEAD
- OPEN FACE BREATHING ZONE OPERATION FOR ROOM AIR
- SEALED PLASTIC CASE WITH CARRYING HANDLE
- CLEAR FRONT PANEL



**FILTER TAPE**

**MATERIAL:** 5.0 um TEFLON MEMBRANE FILTER  
**SPECLO#** BSP-FILT-50BTA  
**WIDTH:** 1.25"  
**LENGTH:** 1,200" (other lengths optional)

**OPERATION**

1 YEAR 1 YEAR UNATTENDED USE – STEP EVERY 8 HRS  
1 MONTH 1 MONTH UNATTENDED USE – STEP EVERY 1 HR  
**SIZE :** 5" X 10" X 7"  
**WEIGHT:** 5 LBS  
**MODES:** (SPECIFY IN PURCHASE ORDER)  
    **REMOTE START** SINGLE SHOT  
    **TIMED OPERATION – (PRESET TIME)**  
        SINGLE SHOT  
        AUTO REPEAT

**OPTIONS AND ACCESSORIES**

**FILTER ROLLS-** LONGER, SHORTER  
**SNIFFER HOSE** FROM HOOD, GLOVE-BOX, STACK OR OTHER LOCATION  
**MASS FLOW SENSOR** PRECISION HOTWIRE SENSOR OR SIMPLE ROTOMETER  
**POWER** 115 VAC – 60HZ STANDARD  
230 VAC – 50 HZ OPTIONAL  
DC SYSTEM ALSO AVAILABLE  
**MOUNTING** WALL MOUNT PLATE, HANDHELD OR TRIPOD

**TA TECHNICAL ASSOCIATES**

7051 ETON AVENUE, CHANDLER PARK, CA 91001  
TELEPHONE (951) 482-7843 FAX (951) 482-4182  
[www.taassoc.com](http://www.taassoc.com) [www.tech-assoc.com](http://www.tech-assoc.com)



Technical Associates 1946



# QUICK RESPONSE PLUTONIUM DETECTOR FAST CAM 5



# **QUICK RESPONSE PLUTONIUM DETECTOR FAST CAM 5**



**Assures Safety against Airborne Alpha Radiation  
Even In High Or Varying Background Situations !**

**ALARMS ON**  
**74 Bq//M<sup>3</sup> –in- 10sec**

**ONLY 2.7 DAC-HR**  
**To Trigger**



# **SETUP FOR QUICK FILTER EXCHANGE**



**Detector Swings Aside For Easy Filter Replacement**

## **40 CFM FLOW RATE WITH 4 INCH FILTER**



**Elevated Flow Rate Reduces Time For System  
To Detect – Measure – And Respond  
To Ensure The Safety Of Your People**

**Adjustable Response Time From 1sec to 24Hr !**

# **DIGITAL PROCESS READOUT**



**The Readout Is Accompanied By An RS232 Output  
4 to 20mA Process Loop Transmitter Is (Optional)**

**PROVIDES LOCAL OR REMOTE READOUT**



**Fully Compatible To Overdrive Network**



# DUAL DETECTOR



Alpha Detector Is  $\text{ZnS}(\text{Ag})$

**Beta** Detector Is A Plastic Scintillator (.020)"

# SECOND CHANNEL FOR BETA DETECTION



**Dual Phosphor Beta Detector For Radon Rejection**

# DETECTOR COUNTING EFFICIENCY



**20% Of 2pi Pu-239 With Wide Window Setting**

**With a 4" Diameter Filter Paper**

**in the Filter Holder**

# SELECT OPERATING MODE



**Gross Count, Pulse Height Analyzing (PHA)  
OR PHA With Background Subtract (PHA-SUB)**

**ALARMS ON 74 Bq//M<sup>3</sup> –in- 10sec  
ONLY 2.7 DAC-HR To Trigger**



**Remote Alarm, Rotating Alarm Beacon Are Optional**

# **SYSTEM CAN BE UPGRADED FOR PLANTWIDE OPERATION**



**Multi Detector Can Be Connected to Overdrive Network**

# ACCESSORIES & OPTIONS AVAILABLE

UNIT CAN BE EXPANDED TO PARTICULAR NEEDS

**FIL-7DP  
Module**



**MGA-5202  
Module**

**FM-7 Series**

**Examples Of FM-7 Series Multi Function Modules**

## **OPTIONAL POWER INPUTS AVAILABLE**



**Options Include 115VAC @ 60Hz And  
230VAC @ 50Hz**



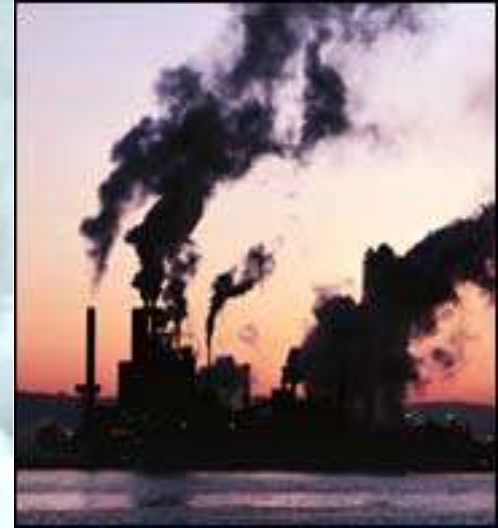


**THE FAST CAM 5 IS CAPABLE OF PROVIDING  
IMMEDIATE - ACCURATE RESPONSES  
MAY PREVENT INJURY, SAVE LIVES**

# **IN ORDER TO KEEP OUR SKIES**



**CLEAN - CLEAR - HEALTHY - AND - SAFE**  
**CLEAN AIR IS GOOD**



**WE MUST FIND BETTER WAYS TO ELIMINATE  
THESE SCENES FROM OUR ATMOSPHERE  
THROUGH DETECTION AND THEN ELIMINATION !!!**





**To Prevent Scenes Like These From Happening,  
Detectors Allow you to Evacuate People  
Before They Become Just Another Statistic !!!**



**TO ENSURE BY THE YEAR 2075**



**OUR SKIES WILL STILL LOOK LIKE THIS !!!**